

# DEWEN™



## **IntelliSolo series UPS 1KW-10KW, Single phase**

**Redefining Power Management  
with Advanced IoT Connectivity**

## **About DEWEN®**

DEWEN, a premier brand under KEMET LIMITED, is dedicated to advancing sustainable power backup solutions for modern industries. Rooted in over 20 years of KEMET's expertise across the Middle East and Africa, DEWEN specializes in the design and manufacture of innovative backup power products, including Uninterruptible Power Supplies (UPS), rectifiers, inverters, and power and frequency converters.

Driven by a commitment to sustainability, DEWEN integrates eco-conscious practices throughout its design and manufacturing processes, ensuring that our solutions are not only reliable but also environmentally responsible. Each DEWEN product is crafted to deliver efficiency and resilience, enabling businesses to maintain continuity while minimizing their environmental impact.

With DEWEN, KEMET LIMITED reinforces its mission to support clients in implementing sustainable, reliable, and efficient power solutions tailored to their unique needs, helping pave the way for a greener future in energy and backup power.

## DEWEN® IntelliSolo Series: Advanced Power Protection for Modern Applications



Advanced power protection with premium features, secure cloud connectivity, and flexible configurations, ensuring reliable performance for modern applications.

The IntelliSolo Series by DEWEN® is a cutting-edge range of single-phase online UPS systems designed to deliver reliable power protection for modern IT setups, small businesses, and critical applications. Combining advanced technology with compact versatility, the series supports both rack-mounted and tower configurations to adapt seamlessly to diverse environments.

Engineered for premium performance, the IntelliSolo Series ensures continuous, stable power delivery through its true double-conversion design, providing robust protection against voltage fluctuations and ensuring uninterrupted operation for sensitive equipment.



Built with adaptability in mind, this series features flexible battery configurations and adjustable charging currents, making it suitable for a variety of power continuity needs. With embedded cloud-ready connectivity, the IntelliSolo Series supports IoT applications, enabling smarter and more efficient energy management.

Whether for IT infrastructures or essential business applications, the IntelliSolo Series by DEWEN® combines efficiency, reliability, and scalability, ensuring your operations remain protected and future ready.



## Hot-Swappable Battery Design for Maximum Uptime

The hot-swappable battery design is a standout feature of the IntelliSolo Series. This feature allows users to replace batteries without turning off the UPS system, ensuring that critical applications continue to run uninterrupted. This is especially crucial for environments where downtime can result in significant disruptions.



### Why It Matters:

- **Minimal Downtime:** Hot-swappable batteries ensure that users can replace batteries with zero downtime, which is essential for businesses that require continuous power for mission-critical operations.
- **Improved Reliability:** The ability to maintain uptime during battery replacement ensures a higher level of reliability for your power protection system, which is vital for high-availability environments like data centers and industrial facilities.
- **Operational Flexibility:** This feature allows for convenient maintenance and upgrades without service interruptions, supporting seamless business operations.



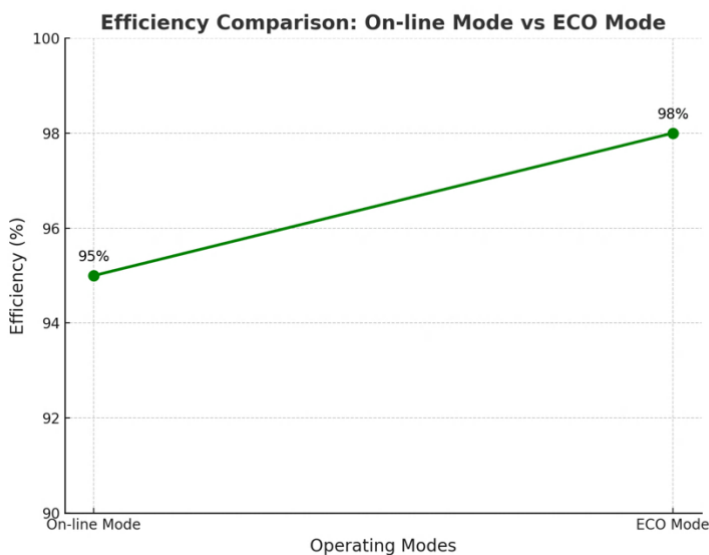
## DEWEN's Commitment to Sustainable Power Solutions!

In today's world, sustainability is not just a value but a necessity. DEWEN is dedicated to creating power solutions that embody environmental responsibility, integrating sustainable practices into every aspect of its products. Through thoughtful design, durable construction, and advanced technology, DEWEN addresses the critical need for reliable power with a minimal environmental footprint.



### Efficiency Meets Eco-Friendly Innovation

The IntelliSolo Series embodies this commitment by combining high operational efficiency with features designed to minimize environmental impact. With ECO mode efficiencies of up to 98% and on-line mode efficiencies up to 95%, the IntelliSolo Series significantly reduces energy consumption, promoting greener operations while lowering costs. Our advanced battery management system, including hot-swappable and adjustable battery configurations, ensures prolonged battery life, reducing waste and resource usage. The series' cloud-based connectivity further enhances sustainability by enabling remote monitoring and centralized management, cutting down on maintenance visits and associated emissions. Through intelligent design and eco-friendly features, DEWEN® delivers power solutions that not only protect critical systems but also support a more sustainable future.



### Key Features of DEWEN® IntelliSolo Series UPS (1-10 KVA)

#### Efficiency and Power Optimization

- High on-line and ECO mode efficiencies.
- Real PF 1.0 for maximum power delivery.

#### Battery Management and Reliability

- Built-in advanced protections.
- Wide input voltage range.
- Generator compatibility.
- Automatic external battery module detection.
- Customizable battery settings (6-10 KVA).

#### Flexibility and User-Friendliness

- Hot-swappable battery design (1-3 KVA).
- Compact form factor (6-10 KVA).
- Programmable outlet groups (1-3 KVA).
- Parallel scalability (6-10 KVA).
- Optional maintenance bypass panel (6-10 KVA).

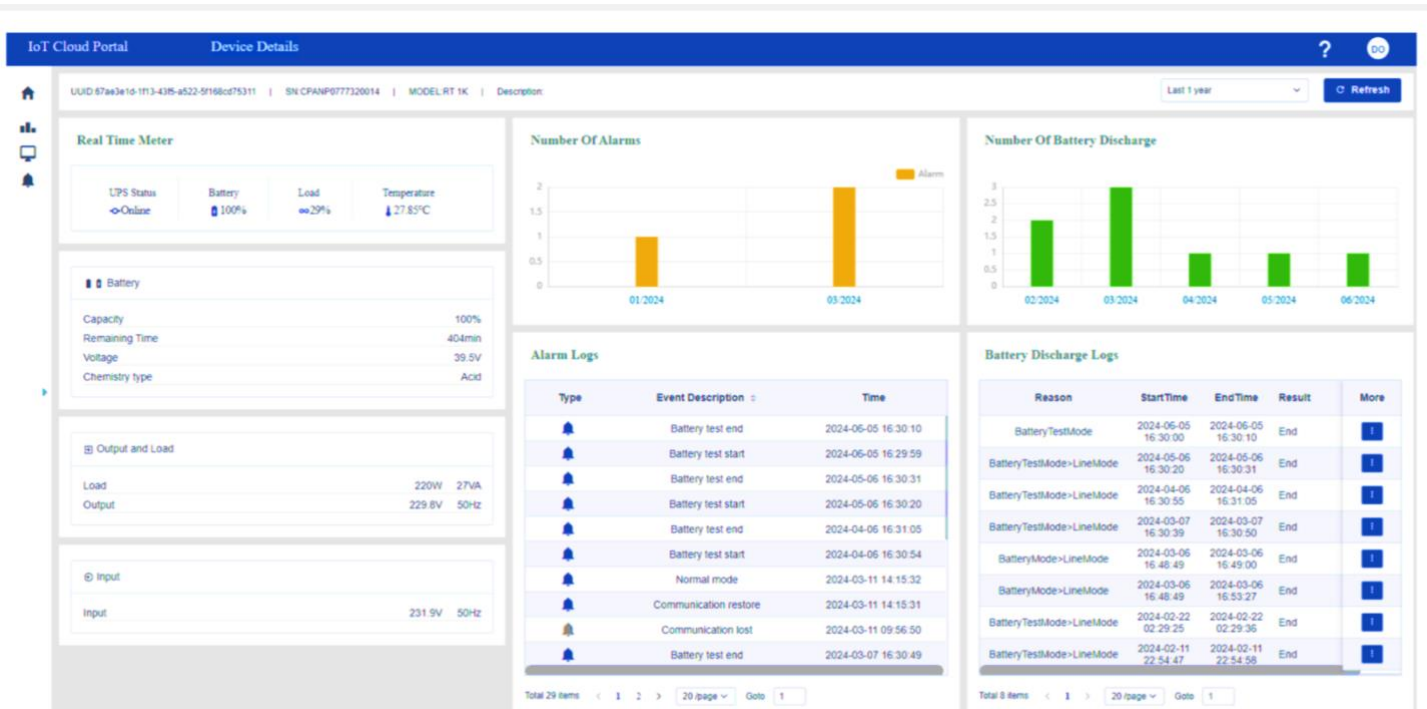
#### Advanced Monitoring and Communication

- Embedded cloud connectivity.
- Wireless communication option.
- Multi-language dot matrix LCD interface.

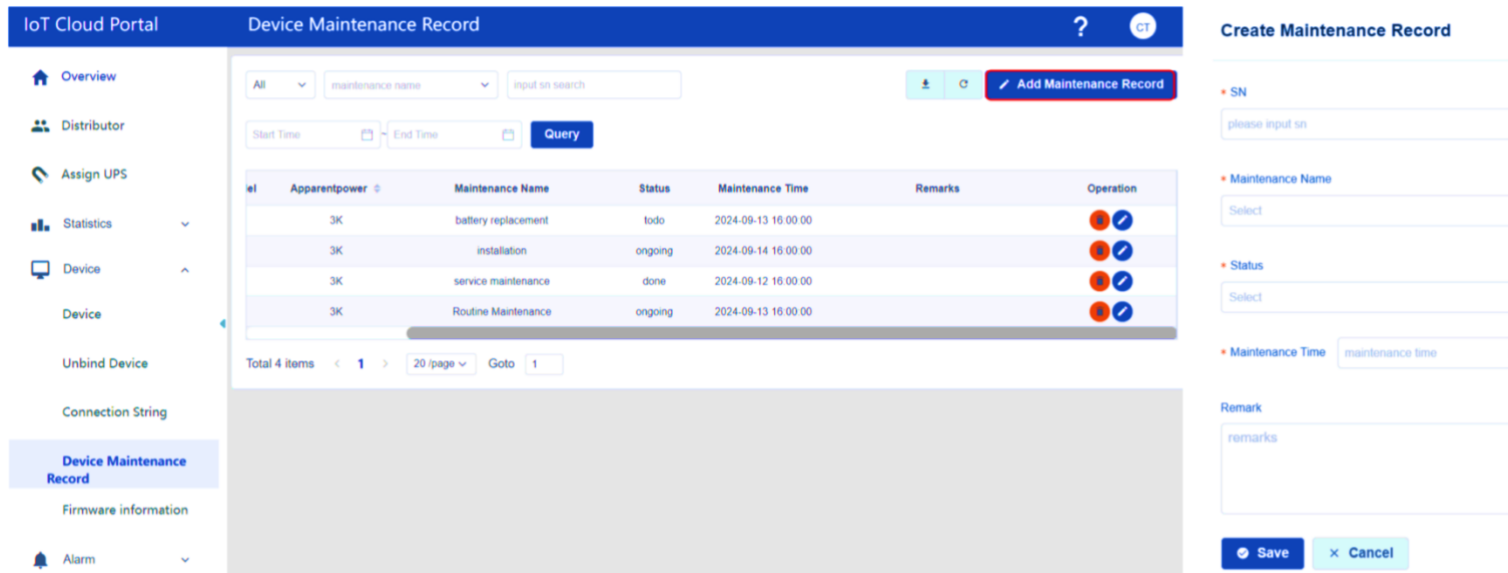
#### Overload Capability

- 125% overload capacity.





Users can view details of registered devices: Real-time Meter, Number of Alarms, Alarm Logs, Number of Battery Discharge, Battery Discharge Logs



Users can create and manage Maintenance Record of registered devices

- Maintenance Name: Battery Replacement, Installation, Service Maintenance, Custom(user-defined)
- Status: to do, ongoing, done

With certifications including IEC 62443 and GDPR compliance, IntelliSolo ensures secure data transmission and protection, adhering to the highest industry standards. Big data analysis and forecasting capabilities enhance operational foresight, while its Wi-Fi certification guarantees reliable and hassle-free connectivity. The IntelliSolo Series empowers users with smarter, safer, and more efficient power management tools for the modern digital landscape.

## Technical Data:

	INTL S 1K	INTL S 1.5K	INTL S 2K	INTL S 3K
PHASE	Single phase with ground			
CAPACITY	1KVA/1KW	1.5KVA/1.5KW	2KVA/2KW	3KVA/3KW
<b>INPUT</b>				
Nominal Voltage	200/208/220/230/240 VAC			
Voltage Range	160-300 VAC @ 100% load			
Nominal Frequency	50/60 Hz (Auto Sensing)			
Frequency Range	40 Hz -70 Hz (45Hz-55Hz or 54Hz-66Hz @ load >60%)			
Power Factor	> 0.99			
Harmonic Distortion (THDi)	< 5%			
<b>OUTPUT</b>				
Nominal Voltage*	200/208/220/230/240 VAC			
Voltage Accuracy	± 1%			
Nominal Frequency	50/60Hz			
THD <sub>v</sub>	< 2% Linear Load < 5% Non-linear Load			
Transfer Time	Zero (AC mode to battery mode) 4 ms (Typical, Inverter to bypass)			
Crest Factor	Max 3:1			
Overload	100% < load ≤ 105% continuous, 105% < load ≤ 125% for 3 minutes., 125% < load ≤ 150% for 30 seconds., load > 150% for 500ms.			
Output Connection	IEC C13, IEC C19			
<b>EFFICIENCY</b>				
AC Mode	89%		93%	
ECO Mode	96%		97%	
<b>BATTERY</b>				
Capacity**	12V/7Ah	12V/9Ah	12V/7Ah	12V/9Ah
Numbers	3	3	6	6
Voltage	36VDC	36VDC	72VDC	72VDC
Charging Current	1.5A (Standard) 8A (Long backup)	1.5A (Standard) 8A (Long backup)	1.5A (Standard) 8A (Long backup)	1.5A (Standard) 8A (Long backup)
Recharge Time**	3h to 90%		3h to 90%	
Backup time**	3min @ 100% load 12.2min@ 50% load	2.4min @ 100% load 8.7min@ 50% load	3.2min @ 100% load 12.9min@ 50% load	2.5min @ 100% load 9.3min@ 50% load
<b>HMI</b>				
LCD Display	Dot matrix LCD, rotatable manually (optional segment LCD)			
Language	10 Languages			
USB	USB 2.0 with HID			
RS232	DB9			
Dry in/out	1 programable dry in; 1 programable dry out			
EPO	Included			
Intelligent slot	Yes (for long card)			
Network card	Optional, NMC long card			
Modbus card	Optional, CMC/Modbus long card			
Dry contactor card	Optional, AS400 long card			
WLAN module	Optional, HDMI type			
Ethernet port for IOT	RJ45			
Monitor Software	Winpower			
<b>PHYSICAL</b>				
Cabinet Dimension (W x D x H)mm	438 x 455 x 86.5 (2U)	438 x 455 x 86.5 (2U)	438 x 630 x 88 (2U)	438 x 630 x 88 (2U)
IP Protection Level	IP20			
<b>ENVIRONMENT</b>				
Operating Temperature	0-40°C			
Relative Humidity	0-95%			
Operating Altitude***	Up to 3000m			
Noise Level	<45dBA		<50dBA	
<b>STANDARD</b>				
Certification	CE, IEC/EN62040			
EMI	C2			
EMS	ESD RS EFT Surge IEC/EN 61000-4-2; IEC/EN 61000-4-3; IEC/EN 61000-4-4; IEC/EN 61000-4-5			



## Accessory:

	INTL S 1K	INTL S 1.5K	INTL S 2K	INTL S 3K
Maintenance Bypass Switch	N/A	N/A	N/A	N/A
Input Power Cable	Yes	Yes	Yes	Yes
Output Power Cable	Yes (1x10A)	Yes (1x10A)	Yes (1x10A)	Yes (1x10A)
EBM Cable	Yes (in EBM)	Yes (in EBM)	Yes (in EBM)	Yes (in EBM)
USB Cable	Yes	Yes	Yes	Yes
RS232	Optional	Optional	Optional	Optional
Rail Kit	Optional	Optional	Optional	Optional
Tower Feet	Yes	Yes	Yes	Yes
Rack Ear	Yes	Yes	Yes	Yes
Manual	Yes	Yes	Yes	Yes

\* Derate capacity to 60% of capacity in CVCF mode and to 90% when the output voltage is adjusted to 208VAC, and 80% when the output voltage is adjusted to 200VAC

\*\* All mentioned values are based on standard UPS with only internal batteries.

\*\*\* The load derating 1% every up 100mm from 1000-3000m.

## Technical Data:

	INTL S 6K	INTL S 10K
PHASE		Single phase with ground
CAPACITY	6KVA/6KW	10KVA/10KW
<b>INPUT</b>		
Nominal Voltage	220/230/240 VAC	
Voltage Range	160-275 VAC @ 100% load	
Nominal Frequency	50/60 Hz (Auto Sensing)	
Frequency Range	40 Hz -70 Hz (45Hz-55Hz or 54Hz-66Hz @ load >60%)	
Power Factor	> 0.995	
Harmonic Distortion (THDi)	< 3% linear load < 5% non-linear load	
<b>OUTPUT</b>		
Nominal Voltage	220/230/240 VAC	
Voltage Accuracy	± 1%	
Nominal Frequency	50/60Hz	
THD <sub>v</sub>	< 1% Linear Load < 5% Non-linear Load	
Transfer Time	Zero (AC mode to battery mode) 10ms (ECO to Inverter)	
Crest Factor	Max 3:1	
Overload	100%< load ≤105% continuous, 105%< load ≤125% for 3 minutes., 125%< load ≤150% for 30 seconds., load >150% for 500ms.	
Output Connection	L/N/PE hardware terminal connection	
<b>EFFICIENCY</b>		
AC Mode	95%	
ECO Mode	98%	
<b>BATTERY</b>		
Capacity	12V/7Ah	12V/9Ah
Numbers	16-20 (adjustable)	
Voltage	192VDC (192VDC-240VDC)	
Charging Current	4A (Adjustable, Standard) 12A (Adjustable, Long backup)	
Recharge Time*	3h to 90%	
Backup time*	3.6min @ 100% load 9.6min @ 50% load	2.1min @ 100% load 8min @ 50% load
<b>HMI</b>		
LCD Display	Dot matrix LCD, rotatable manually (optional segment LCD)	
Language	10 Languages	
USB	USB 2.0 with HID	
RS232	DB9	
Dry in/out	1 programable dry in; 1 programable dry out	
EPO	Included	
Intelligent slot	Yes (for long card)	
Network card	Optional, NMC long card	
Modbus card	Optional, CMC/Modbus long card	
Dry contactor card	Optional, AS400 long card	
WLAN module	Optional, HDMI type	
Ethernet port for IOT	RJ45	
Monitor Software	Winpower	
<b>PHYSICAL</b>		
Cabinet Dimension (W x D x H)mm	438 x 573 x 86.5 (2U,Power module); 438 x 593 x 129 (3U,Battery)	
IP Protection Level	IP20	
<b>ENVIRONMENT</b>		
Operating Temperature**	0-50°C	
Relative Humidity	0-95%	
Operating Altitude***	Up to 3000m	
Noise Level	<45dBA	<50dBA
<b>STANDARD</b>		
Certification	CE, IEC/EN62040	
EMI	C3	
EMS	ESD RS EFT Surge IEC/EN 61000-4-2; IEC/EN 61000-4-3; IEC/EN 61000-4-4; IEC/EN 61000-4-5	

## Accessory:

	INTL S 6K	INTL S 10K
Maintenance Bypass Switch	Optional (built in 1 main outlet group with 1 x IEC C19 + 2 x IEC C13 and 1 programmable outlet group with 1 x IEC C19 + 2 x IEC C13)	Optional (built in 1 main outlet group with 1 x IEC C19 + 2 x IEC C13 and 1 programmable outlet group with 1 x IEC C19 + 2 x IEC C13)
Input Power Cable	N/A	N/A
Output Power Cable	N/A	N/A
EBM Cable	Yes (in EBM)	Yes (in EBM)
USB Cable	Yes	Yes
RS232	Optional	Optional
Rail Kit	Optional	Optional
Tower Feet	Yes	Yes
Rack Ear	Yes	Yes
Manual	Yes	Yes

\* Power derating to 50% @40-50°C.

\*\* All mentioned values are based on standard UPS with only internal batteries.

\*\*\* The load derating 1% every up 100mm from 1000-3000m.

# DEWEN™